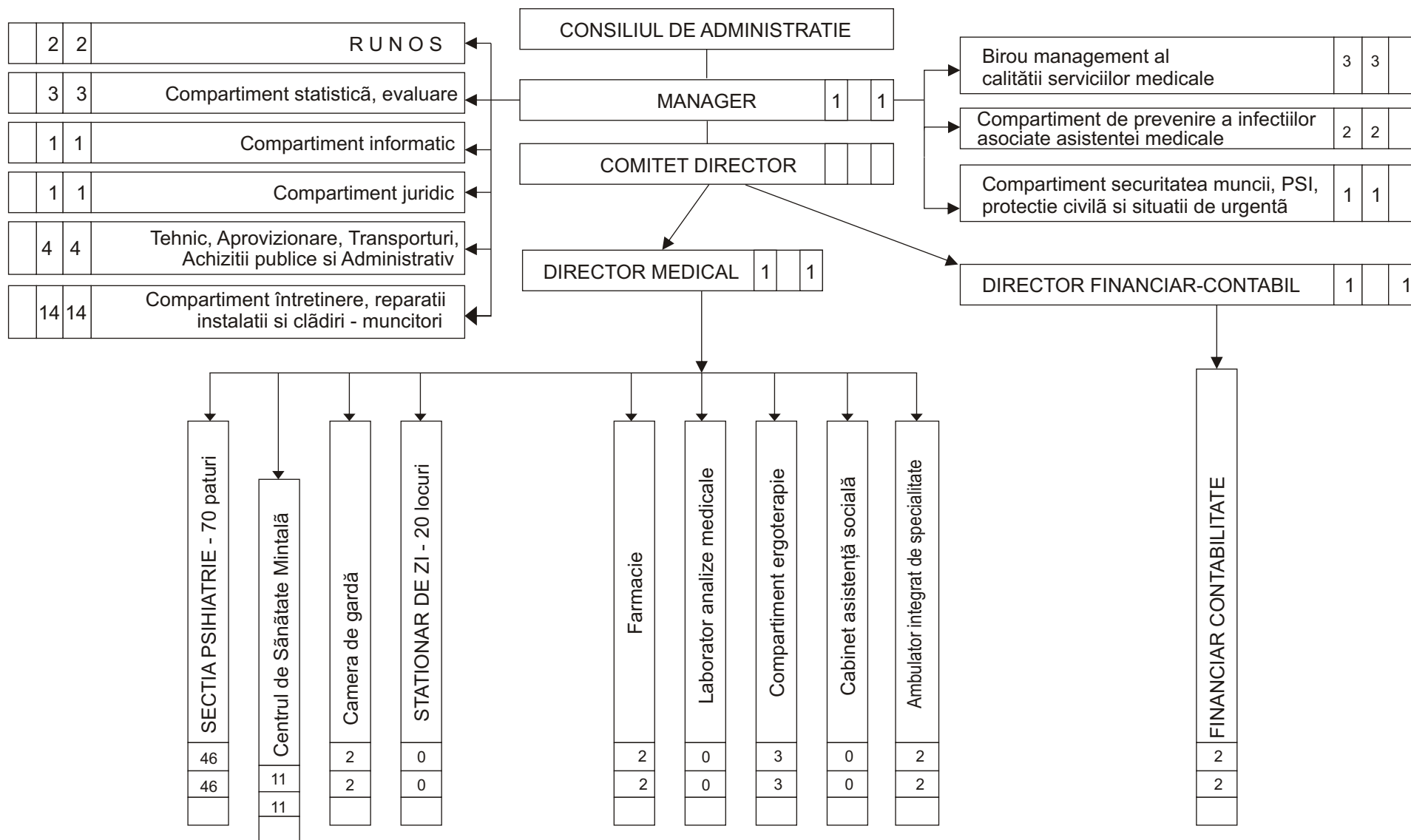


# ORGANIGRAMA

SPITALULUI DE PSIHIATRIE CAMPULUNG MOLDOVENESC  
01-11-2019



MANAGER,  
Dr. **Cristina Luana Zbranca**

DIRECTOR FINANCIAR-CONTABIL,  
Ec. **Aurora Rusu Samson**

TOTAL PERSONAL: 102  
EXECUTIE: 99  
CONDUCERE: 3

COMPARTIMENT RUNOS,  
Ec. **Oanea Mihaela**